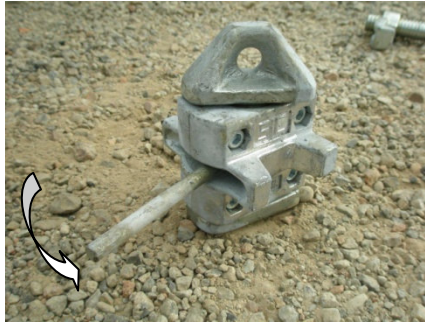
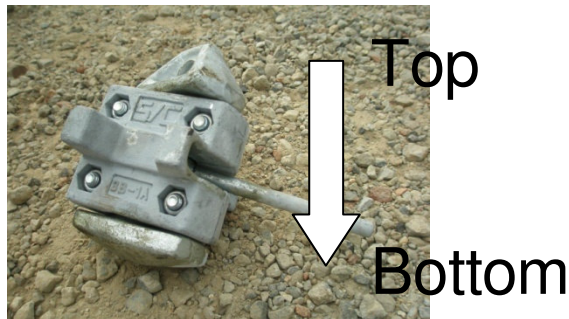


Operating Instruction for Double Ended Twist Locks (Part Number CHDTL)

1. Position twist lock in 'open' position by moving handle to the right.



2. Insert Twist lock into top corner casting of shipping container with flat twist clamp at bottom.



3. Insert twist locks in all four corners of shipping container prior to installing second shipping container.
4. Install second shipping container on top of first shipping container.
5. Close all twist locks by pushing handles to left.

